

# PALLET CONTAINER SYST H-1210 1200X1000X990

## THE SMART PALLET CONTAINER



# SYST-H-1210-1200X1000X990

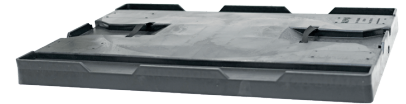


## Hang in lid

- Space saving on site
- Plus in terms of ergonomics and handling

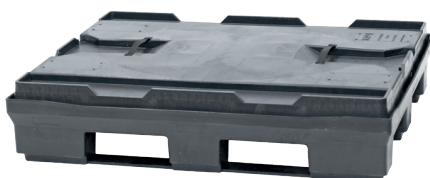
## Lid

- 2 Handles (Black)
- Hang-In Lid
- Control Opening



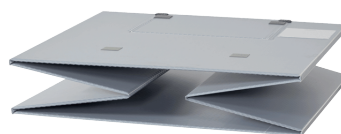
## Safe stacking

- No tying necessary
- Fast and safe stacking



## Secure empty unit

- Protection of the folded sleeve
- No damage to the containers by slipping
- Safe and stable stacking



## Sleeve M fold

- 2 document holder
- Loading door with locking

# SYST-H-1210-1200X1000X990

## TECHNICAL DATA

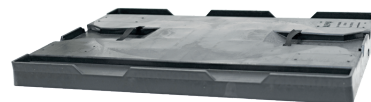
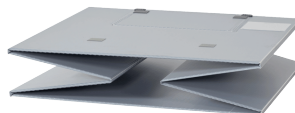
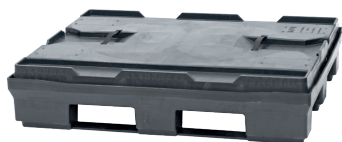
- External dimensions: 1200x1000x990 mm
- Internal dimensions: 1140x940x790 mm
- Volume: 847 L
- Tare weight: 47 kg
- Empties height: 230 mm in a stack
- Fodling system: Sandwich folding
- High rack (without base): No

## LOADS:

- Payload max: 350 kg
- Stacking load (max): 1 250 kg
- Stacking factor: 1+3

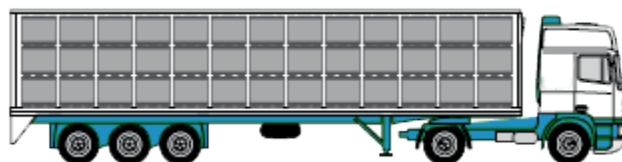
## LOGISTICAL AND TRANSPORT:

- Return rate: 4
- Volume reduction: 75 %



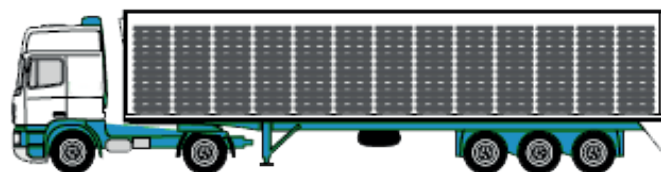
## CAPACITY UTILISATION - MEGA TRAILER

Full: 78



Empty: 312

**75 % VOLUME-REDUCED**



SANDWICH	PALLET	SLEEVE	LID
Material	PE	PP	PE
Grammage	-	3000 g/m <sup>2</sup>	-
Equipment further options available	Closed surface 9 feet, reinforced 2 skids long side 4 way entry pallet drainage holes	M-folding 1 flap door 600x350 mm 2 label holders A5	2 handles black control opening suspension lugs



**1+4  
BLOCK STORAGE**



**1+3**



**1+2**



**1+11**



**1:4,7  
PROPORTIONALLY  
STACKABLE**



IPG **RETURN PACKAGING** CONCEPT  
AN **ECONOMY** INSPIRED BY THE  
CYCLUS OF **NATURE**



[WWW.IP-GROUP.NO](http://WWW.IP-GROUP.NO)

[WWW.IP-GROUP.SE](http://WWW.IP-GROUP.SE)

